



# MONTHLY MEMBERSHIP PROGRESS REPORT

District 322 D

Results as of: 05/31/2018

GMT: SWADESH RANJAN SAHA

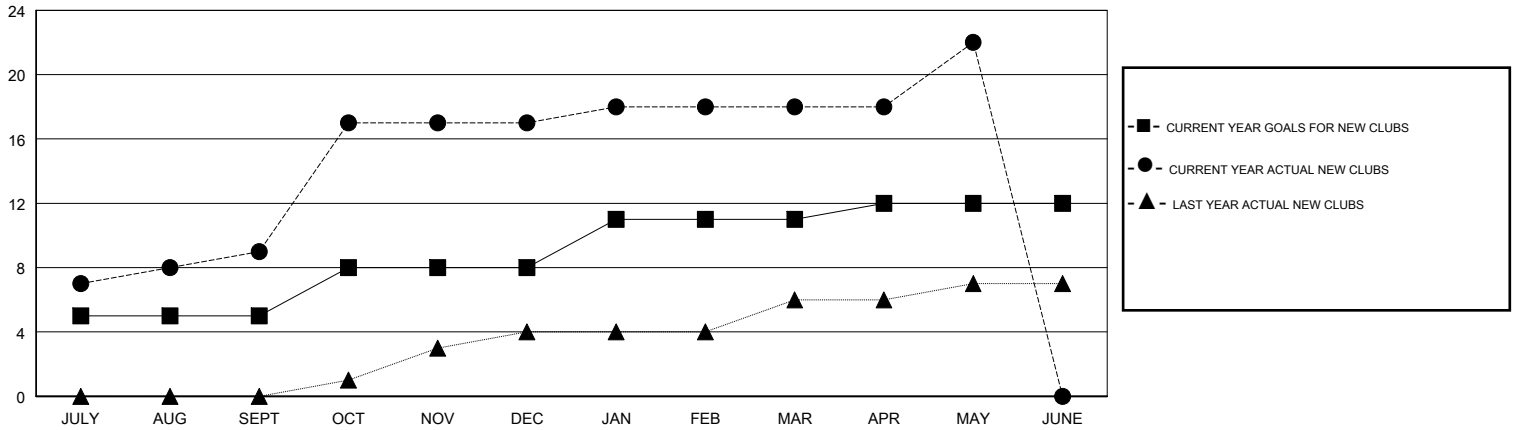
LOCATION INDIA

GMT CA

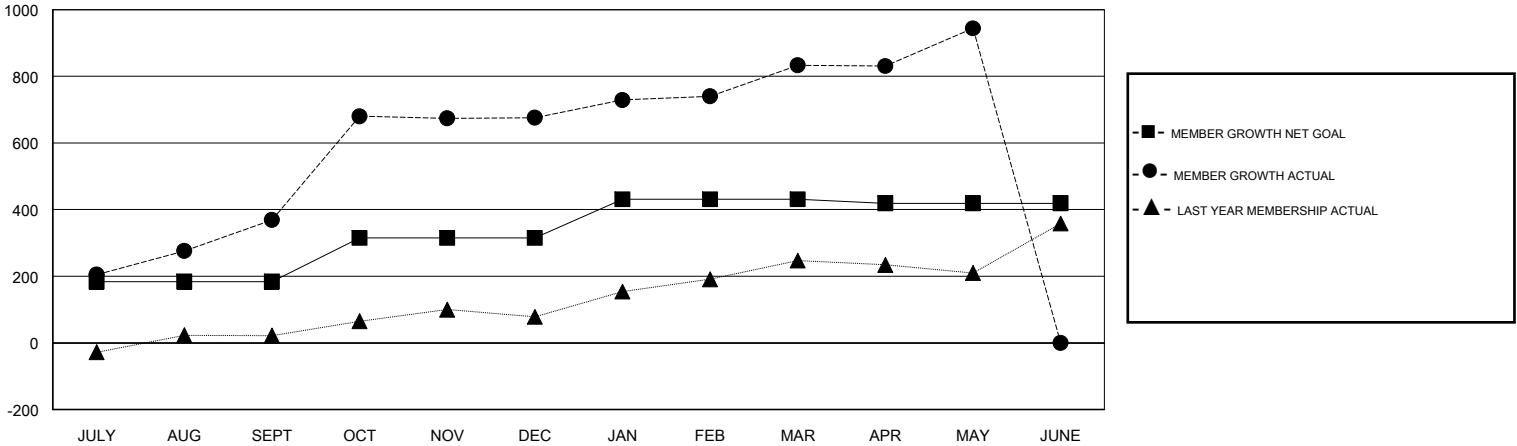
Clubs			
RESULTS FOR 2017-2018			
QUARTER	NEW CLUB GOAL	NEW CLUBS	DROPPED CLUBS
JULY/AUG/SEPT	5	9	0
OCT/NOV/DEC	3	8	0
JAN/FEB/MAR	3	1	0
APR/MAY/JUNE	1	4	0

Members			
RESULTS FOR 2017-2018			
QUARTER	MEMBER GROWTH NET GOAL	MEMBER GROWTH ACTUAL	DROPPED MEMBERS ACTUAL (including transfers)
JULY/AUG/SEPT	184	499	126
OCT/NOV/DEC	131	375	68
JAN/FEB/MAR	116	192	34
APR/MAY/JUNE	-12	207	86

GOALS AND ACTUAL NEW CLUBS CUMULATIVE



GOALS AND ACTUAL MEMBERS CUMULATIVE



DROPPED CLUBS: 0	100 CLUBS OF 125 ADDED 1 OR MORE NEW MEMBERS	<u>GENDER DISTRIBUTION</u> MALE 3,820 (69.73%) FEMALE 1,658 (30.27%) Women Percentage Fiscal Year Goal: 26%
<u>DROPPED MEMBERS</u> DECEASED 17 CLUB CANCELLED 0 OTHER 297 TOTAL 314	<a href="#">CLICK HERE FOR CUMULATIVE MEMBERSHIP DATA</a>	TOTAL FAMILY UNIT MEMBERS 2,064 FAMILY MEMBERS PAYING HALF DUES 1,059